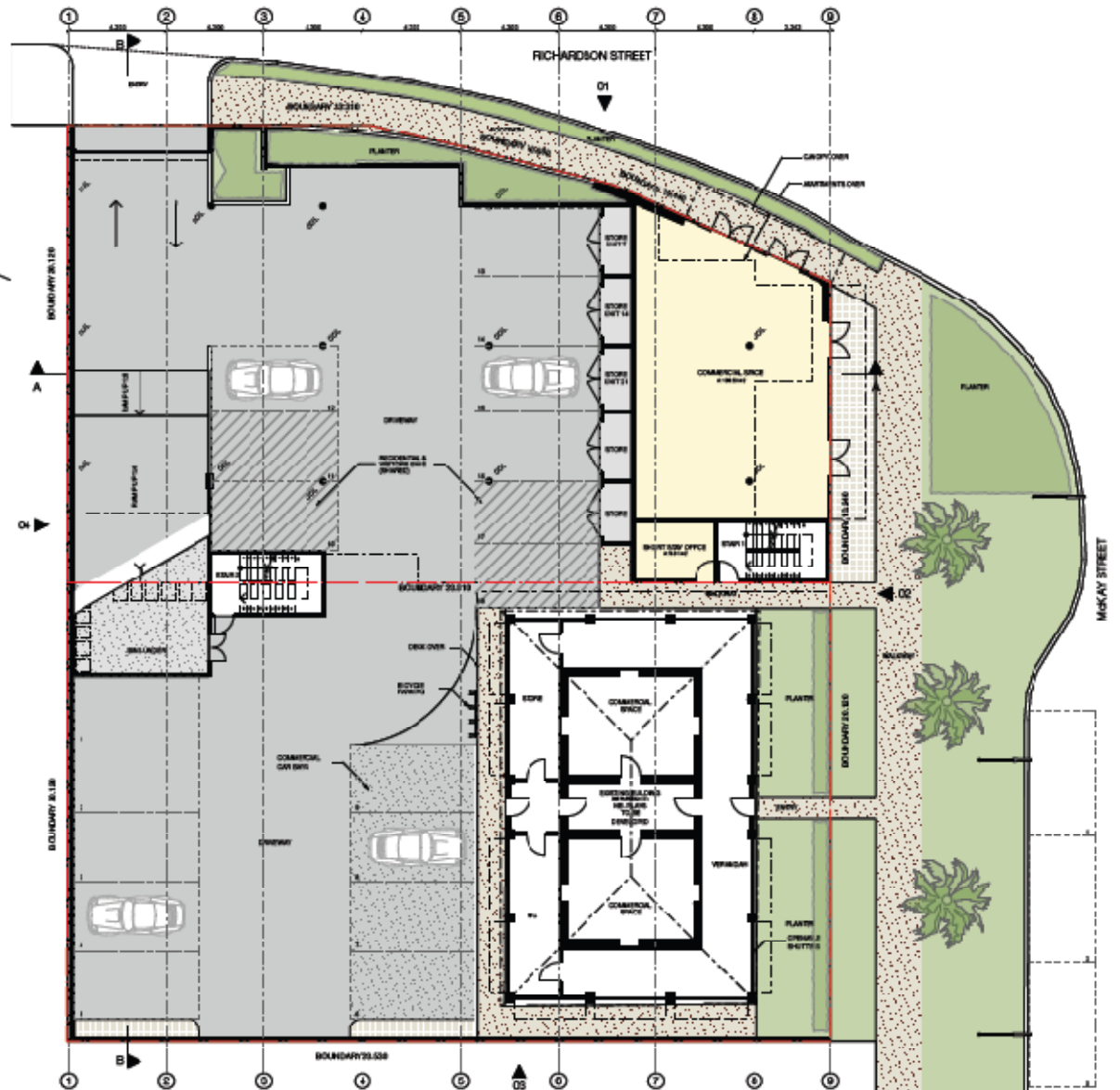
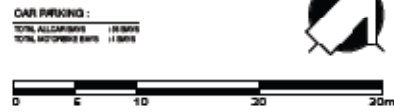


SITE PLAN + ROOF PLAN
1:200



GROUND FLOOR PLAN
1:100



PROPOSED MULTI RESIDENTIAL
 MCKAY STREET, LOTS 101 & 176, PORT HEDLAND

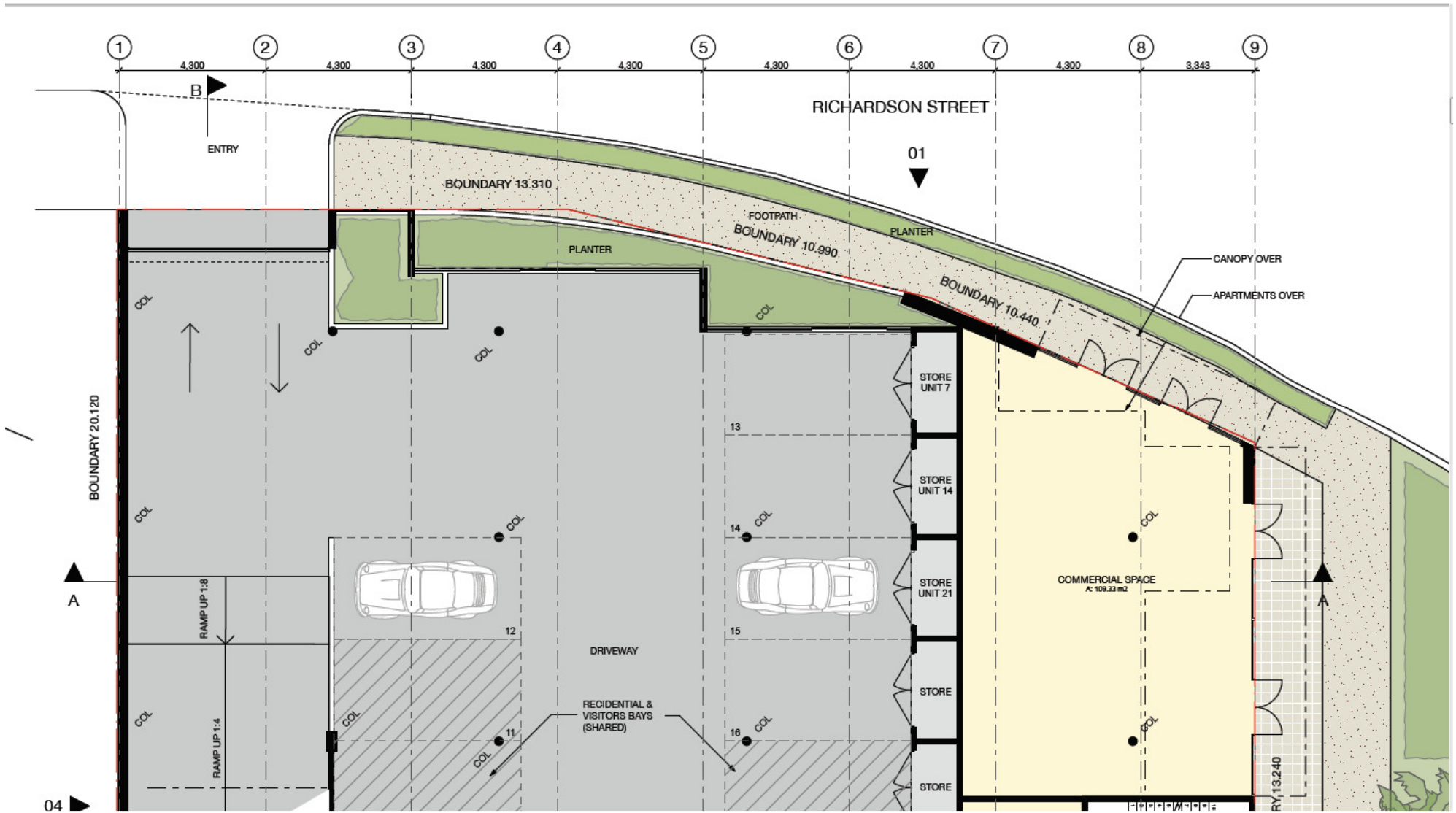
WILCOX & ASSOCIATES PTY LTD, ACN 620 024 141, ABN 62 024 141 332, MARGARET TERRACE, UNIT 7 10, BUNBURY WILCOX STREET, WA, T 408 972 344 F 40 892 316
 MAIL PO BOX 28 BUNBURY WA 6230 (PH/POSTAL) T 40 81 2804 F 40 81 2804 BPO BOX 12 MARGARET TERRACE WA E 408@wilcox.com.au

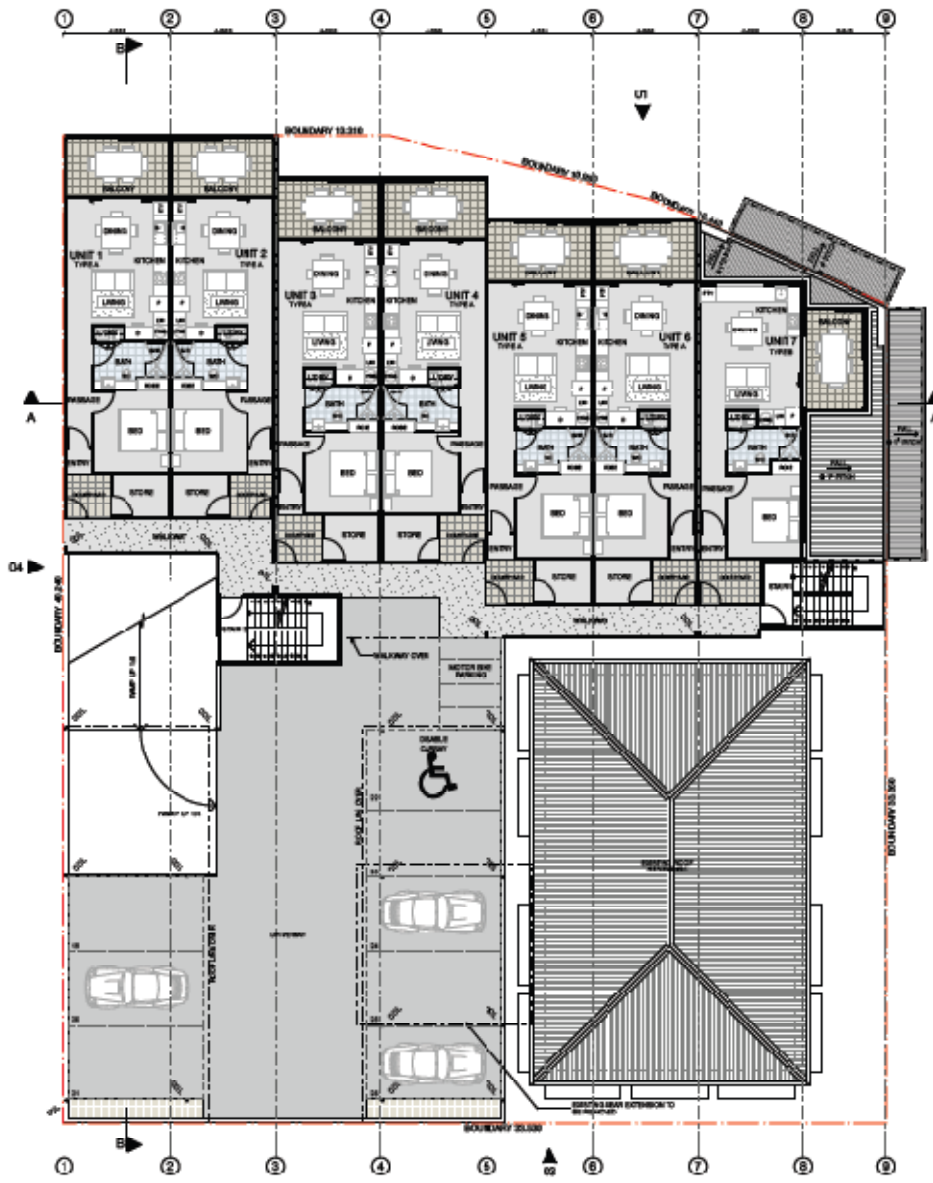
Project No: 2000-P016
 Date: 28/10/2010

wilcox. SK1.02
 STEPLAN & GROUND FLOOR PLAN

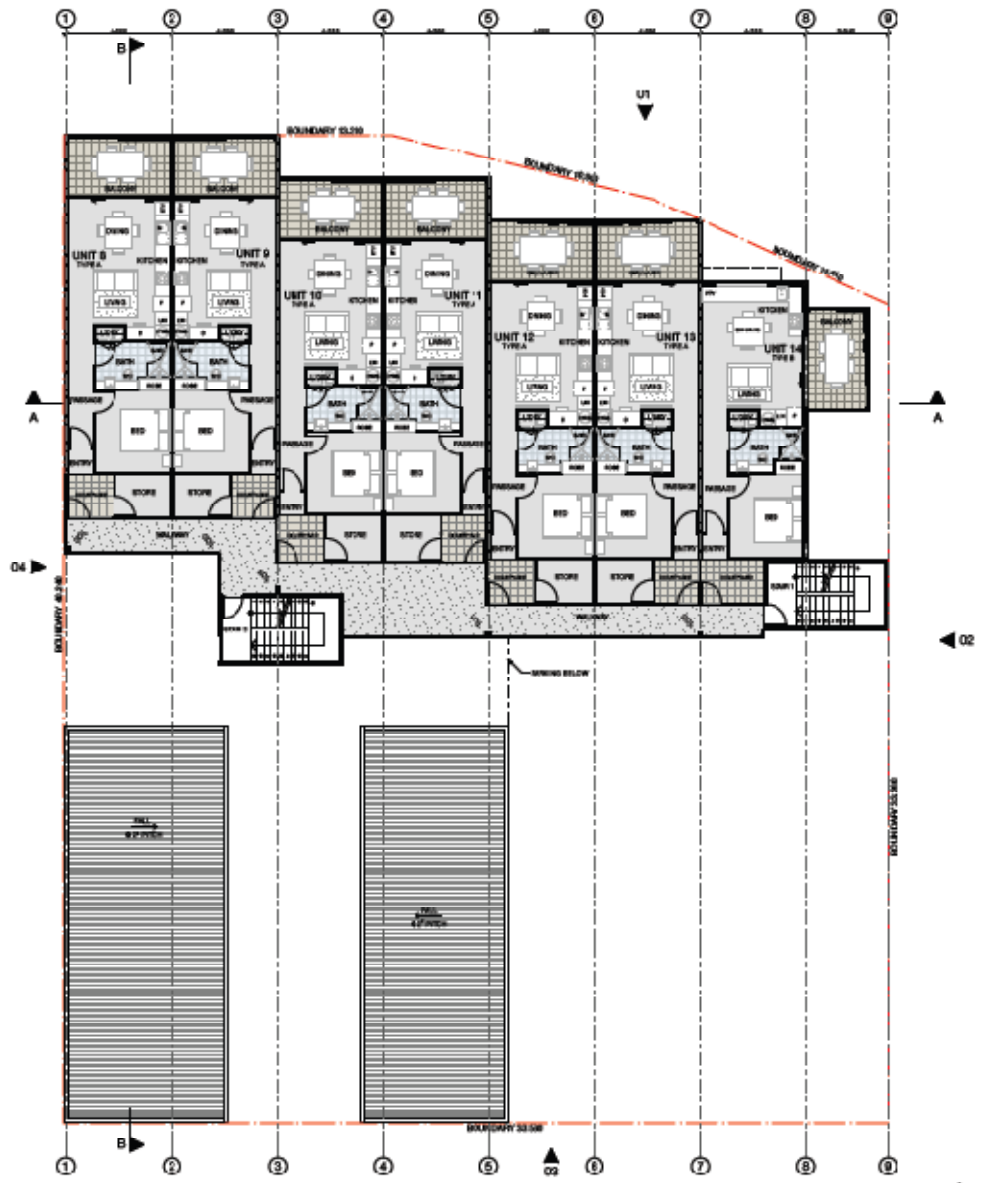
Ground Floor

Store rooms for Units 7, 14 and 21 are located at the front of the undercover car parking bays:





FIRST FLOOR PLAN (UNIT 1 - 7 SHORT STAY ACCOMMODATION)
1:100



SECOND FLOOR PLAN (UNITS 8 - 14 PERMANENT ACCOMMODATION)
1:100

FLOOR PLAN LEGEND

ARCHITECTURE: WILCOX
 ENGINEER: WILCOX
 LANDSCAPE ARCHITECT: WILCOX
 PROJECT ADVISOR: WILCOX

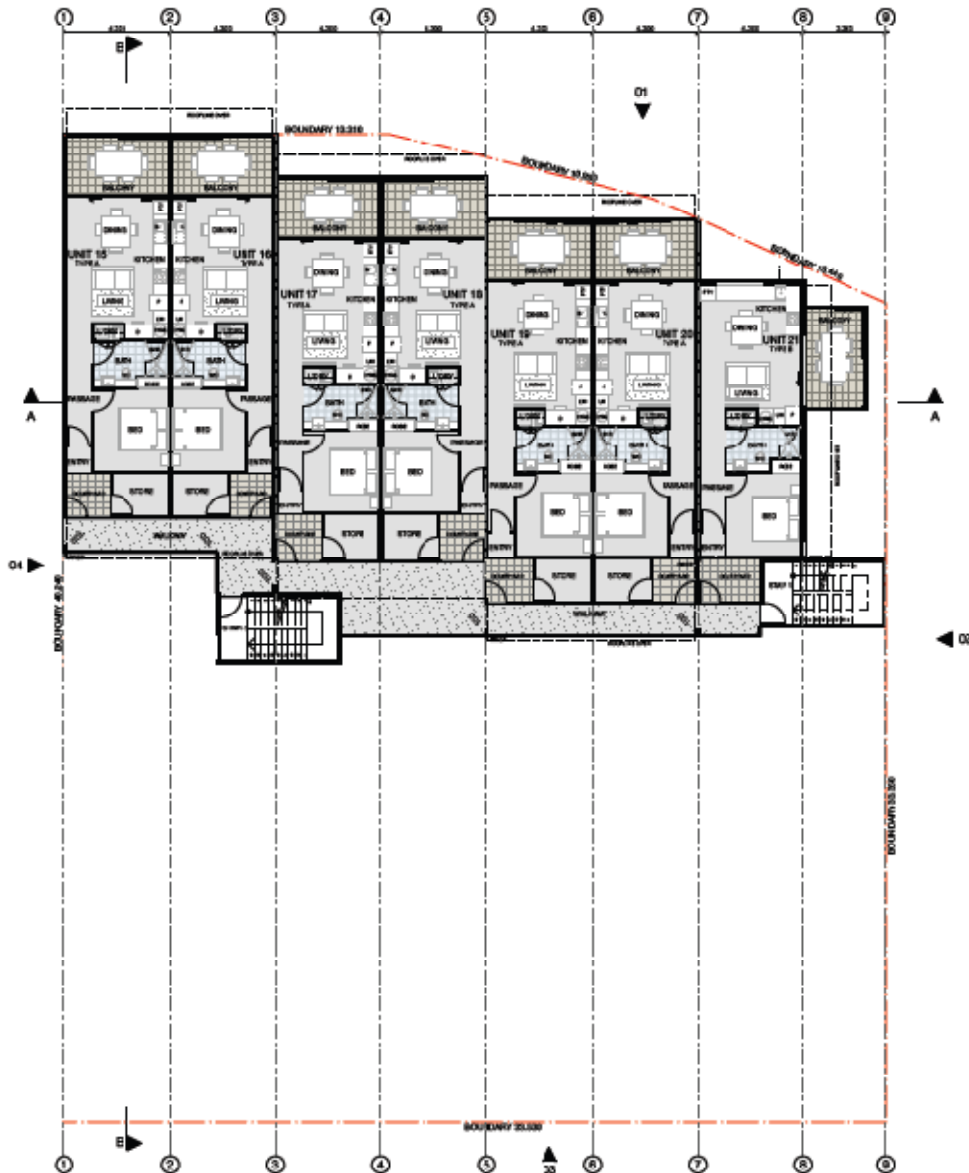


PROPOSED MULTI RESIDENTIAL
 MCKAY STREET, LOTS 101 & 176, PORT HEDLAND

WILCOX & ASSOCIATES PTY LTD ACN 002 614 146 ABN 62 614 146 331 MARGARET STREET UNIT 101 SUBEQUITY 101/102 PORT HEDLAND WA 6715
 WAU J. BARR & B. BARR PTY LTD ACN 002 614 146 ABN 62 614 146 331 MARGARET STREET UNIT 101 SUBEQUITY 101/102 PORT HEDLAND WA 6715

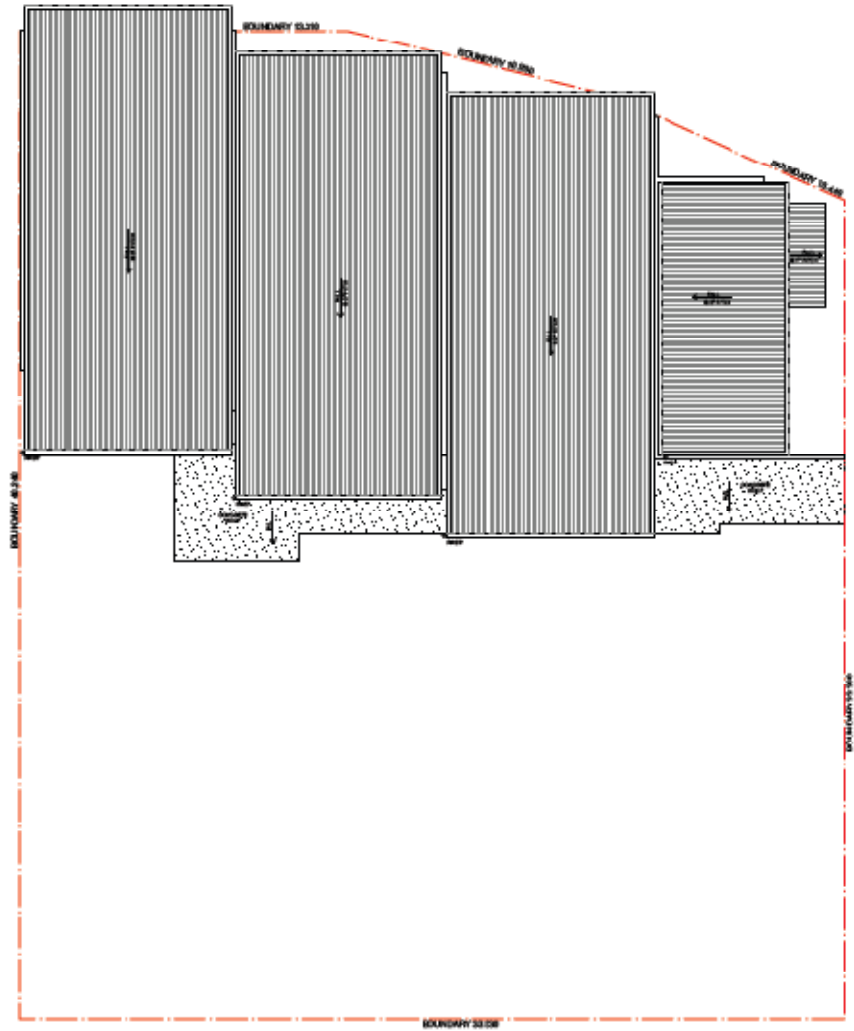
Project No: 2000-P035
 Date: 28/10/2010

SK1.03
 FLOOR PLAN



THIRD FLOOR PLAN (UNITS 15 - 21 PERMANENT ACCOMMODATION)

1:100



ROOF PLAN

1:100

FLOOR PLAN LEGEND

- DECK BALCONY
- TERRACE
- COURTYARD/BEACHFRONT
- BALCONY

- COMMERCIAL CARPARK
- RESIDENTIAL + VISITOR BAY CARPARK
- CARPORTS & DRIVEWAY
- HARD PAVEMENT

- LANDSCAPING
- BOUNDARY
- EASEMENT

- ARCHITECTURE
- INTERIORS
- MECHANICAL/ELECTRICAL
- PROJECT ADMIN
- QUANTITY SURVEY
- STRUCTURAL

PROPOSED MULTI RESIDENTIAL
McKAY STREET, LOTS 101 & 176, PORT HEDLAND

WILCOX ARCHITECTURE PTY LTD, 2000-2002 WILCOX DRIVE, WILCOX VIC 3209, AUSTRALIA. PHONE: (08) 9422 2222. FAX: (08) 9422 2222. WWW.WILCOXARCHITECTURE.COM.AU

willcox.

SK1.04
FLOOR PLAN

Project No: 2000-0105
Date: 02/10/2015